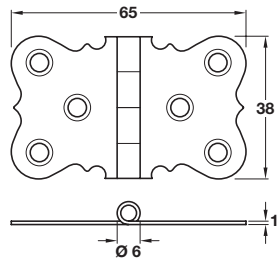


## Table hinge, 38 x 65 x 1 mm

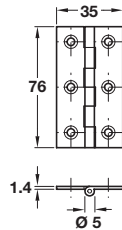


- > For table flaps or cabinet door front flaps
- > Steel
- > Order qty: 1 set

Fixings included ✓

Finish	Cat. No.
Florentine bronzed	354.34.110

## Broad style hinge, 76 x 35 x 1.5 mm



- > With fixed brass pin
- > For general purpose joinery and furniture where durable fittings are required
- > Solid drawn brass
- > Order qty: 1 set

Fixings included ✓

Finish	Cat. No.
Polished chrome	354.24.275