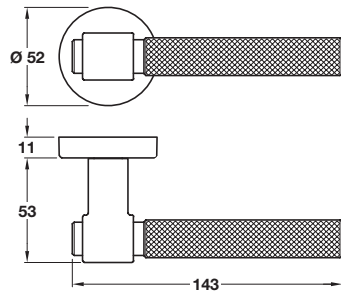


## AXES-T lever handles on rose, zinc alloy



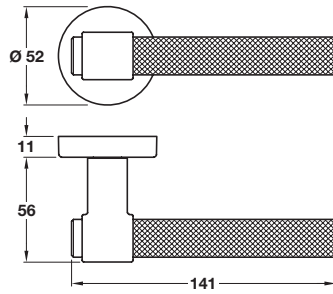
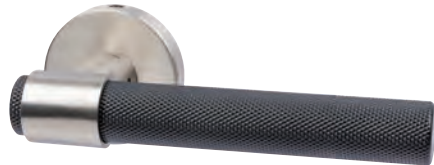
Note: ± 3 mm tolerance on non-critical dimensions

- > Pair of lever handles on round rose
- > Designed for interior doors
- > Grub screw fixing on 8 mm square slotted spindle
- > Sprung, for use with standard duty followers
- > To suit doors 35-43 mm thick
- > Zinc alloy
- > Order qty: 1 pair



Finish	Cat. No.
Brushed black nickel	901.21.723

## AXEL-T lever handles on rose, zinc alloy



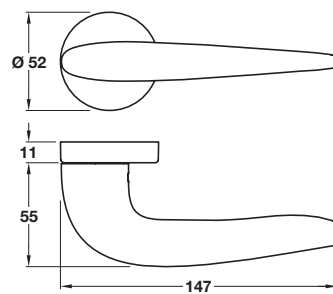
Note: ± 3 mm tolerance on non-critical dimensions

- > Pair of lever handles on round rose
- > Designed for interior doors
- > Grub screw fixing on 8 mm square slotted spindle
- > Sprung, for use with standard duty followers
- > To suit doors 35-43 mm thick
- > Zinc alloy
- > Order qty: 1 pair



Finish	Cat. No.
Matt antique bronze	901.21.701
Matt black painted	901.21.733
Brushed nickel/matt black painted	901.21.743

## ROCKET lever handles on rose, zinc alloy



Note: ± 3 mm tolerance on non-critical dimensions

- > Pair of lever handles on round rose
- > Designed for interior doors
- > Grub screw fixing on 8 mm square slotted spindle
- > Sprung, for use with standard duty followers
- > To suit doors 35-43 mm thick
- > Zinc alloy
- > Order qty: 1 set



Finish	Cat. No.
Polished chrome	901.21.702
Matt brushed chrome	901.21.704
Brushed black nickel	901.21.753



Co-ordinating escutcheons and WC/emergency release also available see page 70