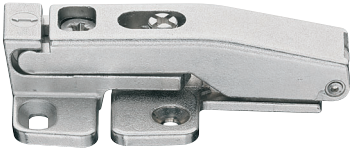
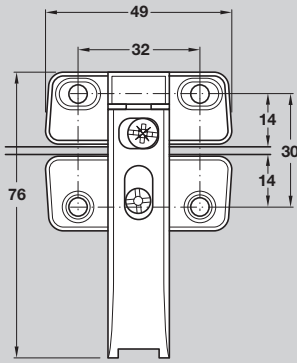


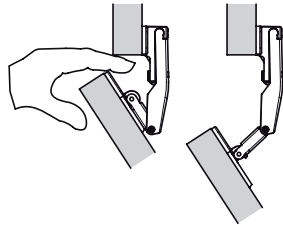
Connecting hinge



Drilling pattern



Finger protection



To avoid injuries the hinge comes apart when fingers get trapped unintentionally in the gap of the flap

- > For use with Free Fold fitting
- > For wooden flaps and flaps with aluminium frame, from frame width 20 mm
- > 3-way adjustment: ± 2 mm side adjustment, -1 to +2 mm gap adjustment, ± 1.5 mm depth adjustment
- > With finger protection function
- > Zinc alloy
- > Order fixing screws separately
- > Order qty: 1 pc

Quantity of hinges required

For door width	No. of hinges
Upto 600 mm	2
Between 600-800 mm	2/3
Over 800 mm	3

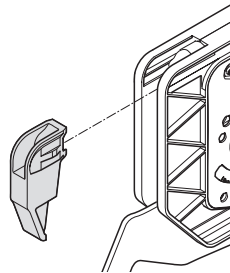


Use 3 hinges for flap widths >900 mm



Finish	Chipboard screws	Euro screws
Nickel-plated	372.64.796	372.64.797

Angle restraint

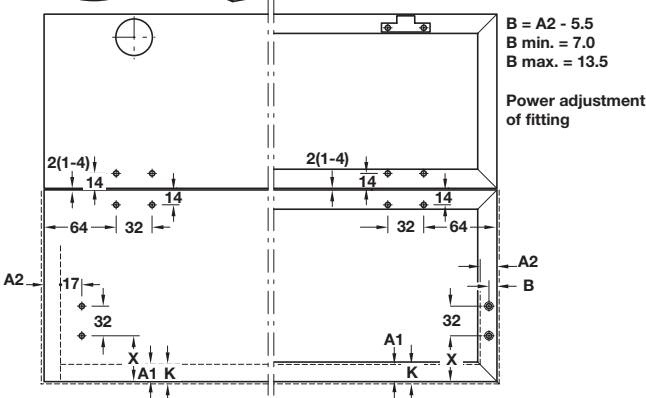
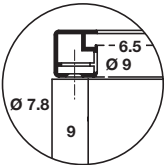
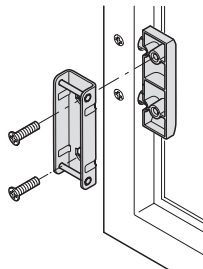
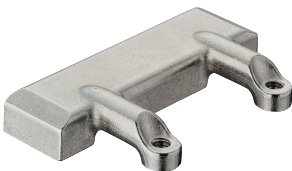


- > For use with Free Fold flap fittings
- > Restricts the opening angle to 90° for low level applications
- > Plastic
- > Order qty: 1 pc (2 pcs required per flap fitting set)



Finish	Cat. No.
Grey RAL 7040	372.37.060

Adapter for flaps with 20 mm aluminium frame



- > Zinc alloy
- > Order qty: 1 pc



Finish	Cat. No.
Nickel-plated	372.37.044

DRAWER SYSTEMS, STAYS AND HINGES 2015, © Häfele U.K. Ltd 2015. Dimensional data not binding. We reserve the right to alter specifications without notice.