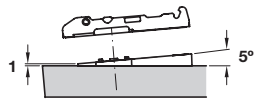


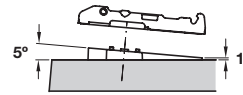
Wedge



Wedge +5°



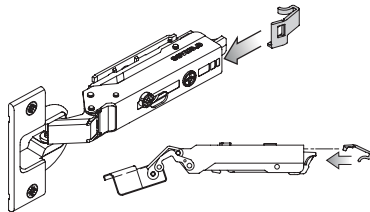
Wedge -5°



- > For cruciform mounting plates that require underlaying either +/- 5°
- > For screwing into 32/37 mm series drilled holes
- > Nickel plated zinc alloy
- > *Max. 3 wedges stacked on top of each other
- > Order qty: 1 pc

	Cat. No.
Wedge + 5° *	348.40.020
Wedge - 5°	348.40.021

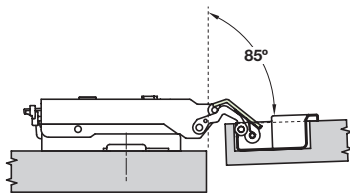
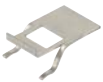
Grass clip protector



- > For use with TIOMOS hinges
- > No accidental unclipping of hinges
- > Easy installation without tools
- > Order qty: 1 pc

Finish	Cat. No.
Grey plastic	348.40.015

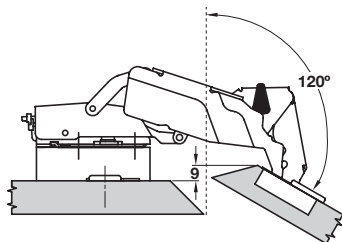
Opening angle restraint



- > Prevents the door from butting against front panels or walls with corner mounting by reducing opening angle to 85°
- > For use with TIOMOS 110° or 120° hinges
- > Bright steel
- > Order qty: 1 pc

Opening angle	Cat. No.
85°	348.40.010

Opening angle restraint



- > Prevents the door from butting against front panels or walls with corner mounting by reducing opening angle to 120°
- > For use with TIOMOS 160° hinges
- > Black plastic
- > Order qty: 1 pc

Opening angle	Cat. No.
120°	348.40.011