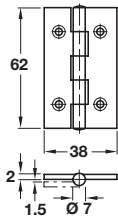


Stainless steel butt hinge

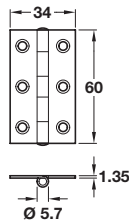


- > Unwashed, with stainless steel fixed spun pin
- > Grade 4 corrosion resistance
- > Stainless steel
- > Order qty: 1 pc



Finish	Cat. No.
Satin stainless steel	921.08.100
Polished stainless steel	926.91.031

Narrow butt hinge

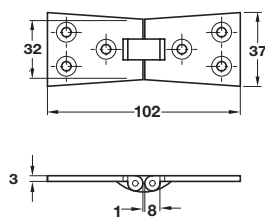


- > Riveted pin
- > Galvanized steel
- > Order qty: 1 pc



Finish	Cat. No.
Galvanized steel	354.01.942

Counterflap hinge

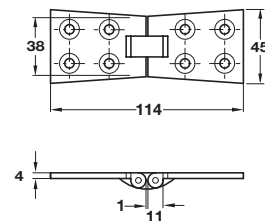


- > Brass with brass pin
- > Counterflap catch shown below
- > Order qty: 1 pc



Finish	Cat. No.
Polished brass	926.95.208
Polished chrome	926.95.202
Satin chrome	926.95.204
Imitation antique bronze	926.95.201

Counterflap hinge

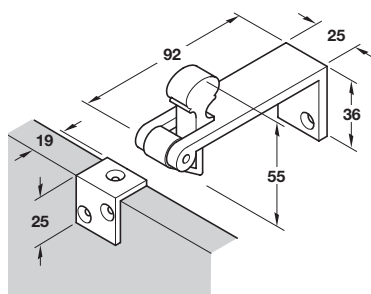
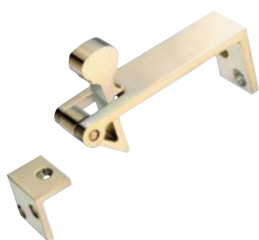


- > Brass with brass pin
- > Counterflap catch shown below
- > Order qty: 1 pc



Finish	Cat. No.
Polished brass	926.95.218
Polished chrome	926.95.212
Satin chrome	926.95.214

Counterflap catch



- > Fixing screws included
- > Brass
- > Order qty: 1 pc



Finish	Cat. No.
Polished brass	521.32.800
Polished chrome	521.32.200
Satin chrome	521.32.400

LIFT, TURN AND SLIDE 2013, © Häfele U.K. Ltd 2013. Dimensional data not binding. We reserve the right to alter specifications without notice.