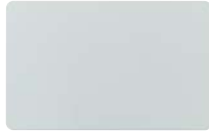


Dialock keys

- For use with all Dialock terminals with Tag-it™ processors
- Contactless data transmission
- Read/write transponder, using Tag-it™ ISO technology
- No batteries required
- Insensitive to magnetism, mechanical vibrations, humidity, moisture, dust
- Reusable
- Forgery proof
- Temperature range: -35 to +50°C
- Data storage => 10 years



A Diallock key card

- 54 x 85 mm (bank card size to ISO 7810)
- For use with all Diallock terminals with Tag-it™ processor
- User key card - 4 locking authorisations per key card possible
- Can be printed on using most dye film printers
- Plastic

Finish	Cat. No.
White	917.44.011

Order qty: 1 pc

B Diallock key tag

- 43 x 34 x 5 mm, for attaching to key ring
- For use with all Diallock terminals with Tag-it™ processor
- User key - 4 locking authorisations per key tag possible
- Plastic



Finish	Cat. No.
Red	917.44.099
Blue	917.44.098

Order qty: 1 pc

C Diallock key with wristband

- 41 x 34 x 4.5 mm (excluding wristband)
- For use with all terminals with Tag-it™ processor, in particular LockerLock
- User key - 1 locking authorisation per key possible
- Polyamide, black with white insert



Wristband colour	Cat. No.
Red	917.44.209
Blue	917.44.208

Order qty: 1 pc



D Diallock key tag KT

- Ø 36 mm x 7.2 mm, for attaching to key ring
- For use with all Diallock terminals with Tag-it™ processor
- User key - 4 locking authorisations per key tag possible
- Polycarbonite with stainless steel edging



Colour	Cat. No.
White	917.44.107
Black	917.44.103
Grey	917.44.105
Red	917.44.109
Blue	917.44.108
Orange	917.44.101

Order qty: 1 pc

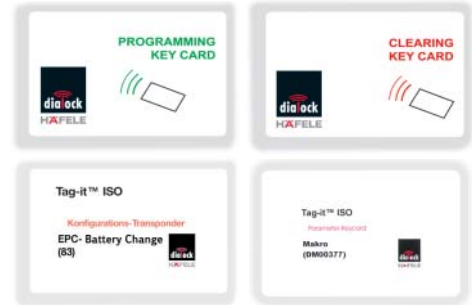
E Diallock key tag

- 28 x 56 x 1.7 mm
- For use with all Diallock terminals with Tag-it™ processor
- User key - 4 locking authorisations per key possible
- Suitable for card printers
- White plastic



	Cat. No.
Key tag	917.44.087

Order qty: 1 pc



F Programming key cards

- 54 x 85 mm (bank card size to ISO 7810)
- For use with EPC reader knob module with Tag-it™ processor
- **Programming card**; for granting access authorisation to electronic keys
- **Clearing card**; for withdrawing access authorisation to electronic keys
- **Battery key card**; for changing the battery. The locking lugs on the knob housing can be pushed in with the battery replacement tool after presenting the key card

Macro key card; can only be used in combination with EFL 3C furniture lock with additional feedback contact (**237.56.305**), FT 120 (**237.58.111**) and MLA 6 multi-lock adaptor (**910.51.083**), macro for MLA 8 multi-lock adaptor available on request

The door open alarm is triggered after 20 seconds if the door has not been locked. Immediate alarm if an unauthorised key is used
Exception: The door open alarm is being deactivated with a privileged key (alarm off key)

- White plastic

Key card	Cat. No.
Programming card	917.42.001
Clearing card	917.42.002
Battery key card	917.43.090
Macro card	917.42.134

Order qty: 1 pc



G Reset, Open Time and Parameter key cards

- 54 x 85 mm (bank card size to ISO 7810)
- For use with all Diallock terminals with Tag-it™ ISO processor
- **Reset key card**: Carries out a reset when used with programming key card

Open Time key card: Changes the opening period of the Diallock lock to up to 120 seconds (standard setting 3 seconds)

Parameter key card: For transferring configuration parameters from the programming station to the Diallock terminal

- **Note**: Special Diallock applications must be programmed by an approved Diallock installer
- White plastic

Key card	Reset	Open time	Parameter
Cat. No.	917.42.027	917.42.021	917.42.029

Order qty: 1 pc