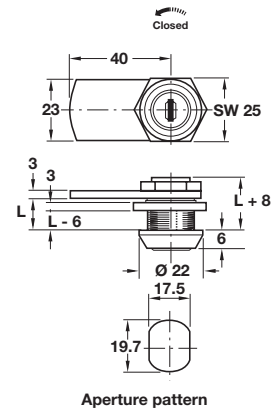


- **90° and 180° Closure directions**
- **Closure directions** can be altered by re-positioning the cam, but always moving in the same direction:
 Closure direction **A** can be altered to **D, F** or **G**
 Closure direction **B** can be altered to **C, E** or **H**
 Closure direction **1** can be altered to **2 - 8**

For metal furniture

Right hand direction A version shown



B Cylinder cam lock

- With **straight cam** and nut attachment
- Closure travel **90°** or **180°**
- **90° with key trap**; key can only be removed in locked position
- **180° without key trap**; key can be removed in locked and unlocked position
- **5 plate levers** = 200 possible key changes
- Galvanized steel nuts and cam
- Polished chrome-plated zinc alloy cylinder
- **Accessories:** 2x keys, 1x locking cam and 2x nuts

Random key changes

| Closure direction | A | B | 1 |
|-------------------|---------------------|---------------------|--------------------|
| Length L | 90° A(D,F,G) | 90° B(C,E,H) | 180° 1(2-8) |
| 13.0 mm | 235.73.211 | 235.73.220 | 235.73.202 |
| 26.0 mm | - | - | 235.74.209 |
| 32.5 mm | - | - | 235.75.206 |

Keyed alike: Key change FH1

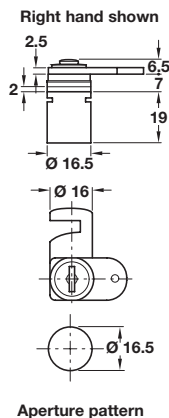
| Closure direction | A | B | 1 |
|-------------------|---------------------|---------------------|--------------------|
| Length L | 90° A(D,F,G) | 90° B(C,E,H) | 180° 1(2-8) |
| 13.0 mm | 235.73.266 | 235.73.275 | 235.73.257 |
| 26.0 mm | - | - | 235.74.254 |
| 32.5 mm | - | - | 235.75.251 |

Order qty: Multiples of 10 pcs

7

Cabinet Locks

For wooden furniture



A Cam lock

- With **straight cam**
- Closure travel **180°**
- **Without key trap**; key can be removed in locked and unlocked position
- **5 plate levers** = 200 possible key changes
- Zinc-plated steel cam
- Nickel-plated zinc alloy cylinder
- **Accessories:** 2x keys and 1x locking cam

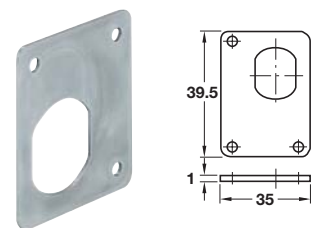
Random key changes

| Closure direction | 8 |
|-------------------|-----------------|
| Handed | 180° 5-8 |
| Left hand | 235.02.710 |
| Right hand | 235.02.720 |

Order qty: 1 pc

C Locking plate

- For cam locks with aperture pattern 19.7 x 17.5 mm
- Steel



| | |
|------------|------------|
| Finish | Cat. No. |
| Galvanized | 235.73.908 |

Order qty: Multiples of 10 pcs

TCH 2013, © Häfele U.K. Ltd 2013. Dimensional data not binding. We reserve the right to alter specifications without notice.