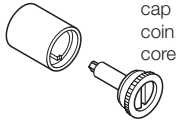


Symo 3000 Locking System

Inlaid Flap, Cam and Push-Button Lock Cases

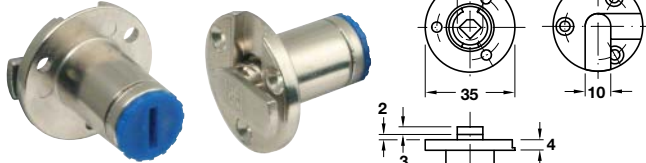
Cylinder housing

The locks can be operated by turning the protective cap with a screwdriver or coin, before the cylinder cores are installed



Protective cap

Note: Inlaid flap lock case **A** and cam lock case **C** are only suitable for use with **plate lever cylinder cores** shown on page 15



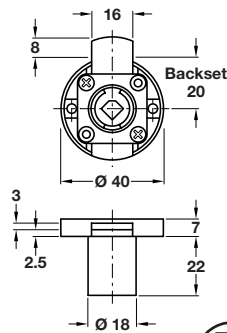
A Symo 3000 inlaid flap lock case

- For on-site installation of cylinder cores
- Zinc alloy
- Order **cylinder rosette** separately



Finish	Cat. No.
Nickel-plated	219.20.600

Order qty: 1 pc



B Symo 3000 inlaid lock case

- For on-site installation of cylinder cores
- Backset: **20 mm**
- Drawer version
- Zinc alloy
- Order **cylinder rosette** separately



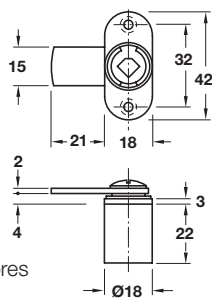
Finish	Cat. No.
Nickel-plated	230.28.620

Order qty: 1 pc

Note: Inlaid flap lock case **A** and cam lock case **C** are only suitable for use with **plate lever cylinder cores** shown on page 15



Refer to page 10 for closure direction conversion guide



C Symo 3000 cam lock case

- For on-site installation of cylinder cores
- Closure travel 90°, convertible*
- Nickel-plated zinc alloy
- **Accessories:** 1x locking cam, 1x mounting screw and 1x steel washer
- Order **cylinder rosette** separately

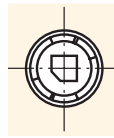


Closure direction	A (D, F, G*)	B (C, E, H*)
Cat. No.	235.59.600	235.59.610

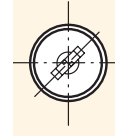
Order qty: 1 pc

Inserting cylinder core in push-button lock case

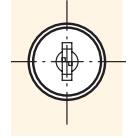
- Cylinder core removal takes place in the reverse order, with the removal key



Push button cylinder lock housing delivery condition 45°



Insert cylinder core with original key in this manner...



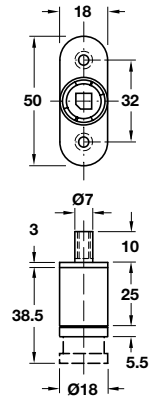
...set cylinder core in a straight position = functioning position

Note: Push-button lock cores are only suitable for use with **plate lever cylinder cores** shown on page 130



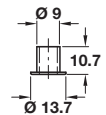
D Push-button lock case

- For on-site installation of cylinder cores
- Locking pin with M5 internal thread
- Zinc alloy
- Order **cylinder rosette** separately



Finish	Cat. No.
Nickel-plated	234.65.600

Order qty: 1 pc



E Locking socket

- For use with push-button cylinder locks
- Brass

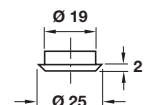
Finish	Cat. No.
Matt nickel-plated	234.59.994

Order qty: 10 pcs



F Cylinder rosette

- Stainless steel



Finish	Cat. No.
Polished nickel-plated	219.19.677

Order qty: Multiples of 100 pcs