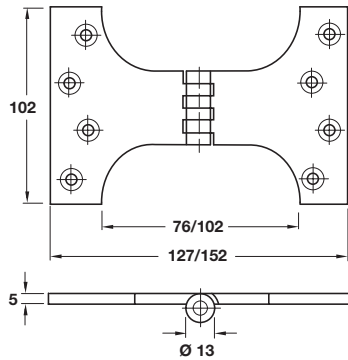




Because of the short hinge knuckle this hinge can not sustain excessive loads or extra wide doors. If in doubt please consider extra wide projection hinges shown on page 96.



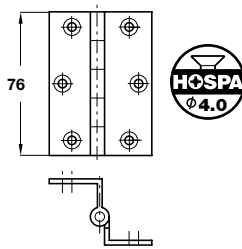
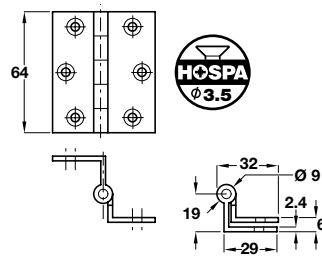
Parliament hinge

- Suitable for lightweight applications only
- Brass pin
- Fixing screws included
- Extruded brass



Finish	Polished brass	Satin chrome
Length x width	102 x 127 mm	
Cat. No.	921.08.590	921.08.594
Length x width	102 x 152 mm	
Cat. No.	921.08.610	921.08.614

Order qty: 1 pc

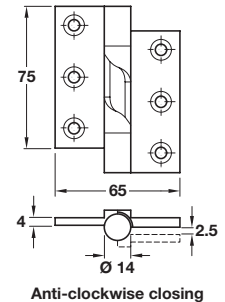
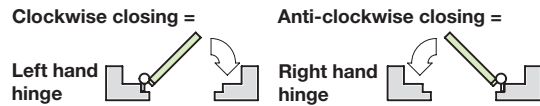


Brass stormproof hinge

- Brass pin
- Brass

Length	64 mm	76 mm
Self colour	321.61.010	321.61.020

Order qty: 1 pc



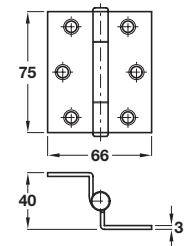
Brass rising butt hinge

- Not suitable for fire door applications
- Handed - specify clockwise or anti-clockwise closing
- Maximum adjusted door weight 45 kg
- Hinge rises 6 mm at 90°
- Door closes on release
- Fixing screws included
- Galvanised steel pin and galvanised plated cam
- Brass
- Note: Only 2 hinges per door leaf are required



Length x width	75 x 65 mm	
Finish	Polished brass	Satin chrome
Clockwise closing	926.26.580	926.26.541
Anti-clockwise cl.	926.26.480	-

Order qty: 1 pc



Brass storm proof cranked hinge

- Brass

Length x width	75 x 66 mm	
Finish	Satin chrome-plated	Polished brass
Cat. No.	926.89.114	926.89.118

Order qty: 1 pc



TCH 2013. © Häfele U.K. Ltd 2013. Dimensional data not binding. We reserve the right to alter specifications without notice.