

BS EN 1935

4 7 6 1 1 4 0 13

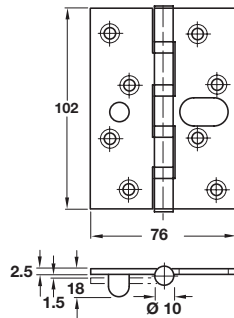
**Phoenix Slimline, stainless steel butt hinge**

- Staggered hole pattern
- Grade 13 BS EN 1935
- Certifire approved; certificate no. CF351 30 mins
- Maximum adjusted door weight 120 kg
- Square or radius corners
- Ø 5 x 30 mm wood screws included
- Five knuckle hinge with hardened steel thrust washers
- Grade 304 stainless steel



Corners	Square	Radius
Length x width <b>102 x 76 mm</b> . Min. door thickness <b>35 mm</b>		
Satin	921.08.140	926.91.340
Polished	926.91.041	926.91.341
Length x width <b>102 x 89 mm</b> . Min. door thickness <b>44 mm</b>		
Satin	926.91.350	926.91.360
Length x width <b>102 x 102 mm</b> . Min. door thickness <b>44 mm</b>		
Satin	921.08.168	-
Polished	926.91.051	-
Brass plated, electrophoretic	926.91.018	-

Order qty: 1 pc



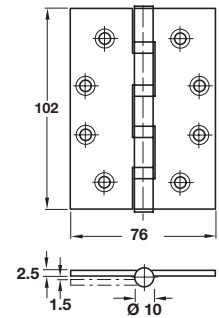
**Phoenix Slimline, stainless steel security butt hinge**

- Staggered hole pattern
- Maximum adjusted door weight 120 kg
- Minimum door thickness 35 mm
- Square corners
- Ø 5 x 30 mm wood screws included
- Grade 304 stainless steel



Length x width	<b>102 x 76 mm</b>	
Finish	Satin	Polished
Cat. No.	921.08.170	926.91.401

Order qty: 1 pc



BS EN 1935

4 7 6 1 1 4 0 13

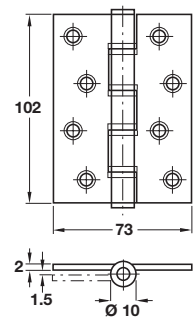
**Phoenix Slimline, stainless steel butt hinge**

- ANSI hole pattern
- Grade 13 BS EN 1935
- Certifire approved; certificate no. CF351 30 mins
- Maximum adjusted door weight 120 kg
- Minimum door thickness 35 mm
- M5 X 12 mm machine screws included
- Five knuckle hinge with hardened steel thrust washers
- Grade 304 stainless steel



Length x width	<b>102 x 76 mm</b>	
Finish	Satin	Polished
Cat. No.	926.91.380	926.91.381

Order qty: 1 pc



**Phoenix Stainless steel washered butt hinge**

- Staggered hole pattern
- Maximum adjusted door weight 60 kg
- Minimum door thickness 35 mm
- Square corners
- Ø 5 x 30 mm wood screws included
- Five knuckle hinge, double washered
- Grade 304 stainless steel



Length x width	<b>102 x 73 mm</b>	
Finish	Cat. No.	
Satin	921.08.122	

Order qty: 1 pc