

BS EN 1935

4 7 6 1 1 4 0 13

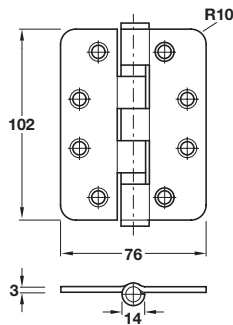
Häfele Stainless steel ball bearing butt hinge

- ANSI hole pattern
- Grade 13 BS EN 1935
- DoP No. - see table below
- Maximum adjusted door weight 120 kg
- Minimum door thickness 35 mm
- Square corners
- Two high quality ball race joint bearings
- Grade 304 stainless steel



Length x width	102 x 76 mm	
Finish	DoP No.	Cat. No.
Satin stainless steel	926.33.B	926.90.203
Polished stainless steel	5315	926.90.131
Brass plated	5315	926.90.138

Order qty: 1 pc



BS EN 1935

4 7 6 1 1 4 0 13

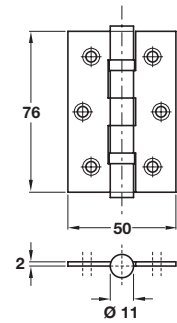
Häfele Stainless steel ball bearing butt hinge

- ANSI hole pattern
- Grade 13 BS EN 1935
- DoP No. - see table below
- Maximum adjusted door weight 120 kg
- Minimum door thickness 35 mm
- Radius corners
- Two high quality ball race joint bearings
- Grade 304 stainless steel



Length x width	102 x 76 mm	
Finish	DoP No.	Cat. No.
Satin stainless steel	926.33.B	926.90.213
Polished stainless steel	5315	926.90.141
Brass plated	5315	926.90.148

Order qty: 1 pc



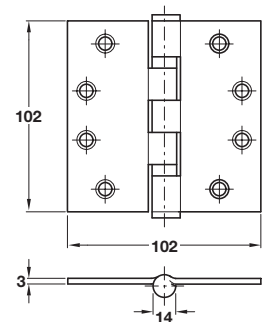
Stainless steel ball bearing butt hinge

- ANSI hole pattern
- Maximum adjusted door weight 40 kg
- Minimum door thickness 25 mm
- Square corners
- Two high quality ball race joint bearings
- Fixing screws included
- Grade 304 stainless steel



Length x width	76 x 50 mm	
Finish	Satin	Polished
Cat. No.	926.96.300	926.96.301

Order qty: 1 pc



BS EN 1935

4 7 6 1 1 4 0 13

Stainless steel ball bearing butt hinge

- ANSI hole pattern
- Grade 13 BS EN 1935
- Maximum adjusted door weight 120 kg
- Minimum door thickness 44 mm
- Square corners
- Two high quality ball race joint bearings
- Fixing screws included
- Grade 304 stainless steel



Length x width	102 x 102 mm	
Finish	Satin	
Cat. No.	926.33.303	

Order qty: 1 pc

TCH 2013. © Häfele U.K. Ltd 2013. Dimensional data not binding. We reserve the right to alter specifications without notice.