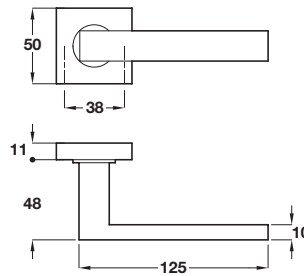
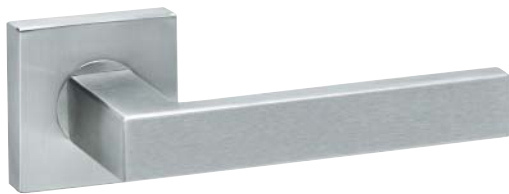


**StarTec TEC lever handles**

- Pair of lever handles and roses
- 8 mm spindle included
- Sprung, for use with standard duty followers
- Bolt through fixings included
- To suit doors **35-44 mm** thick
- Stainless steel

Finish	Cat. No.
Satin stainless steel	902.20.312

Order qty: 1 pair

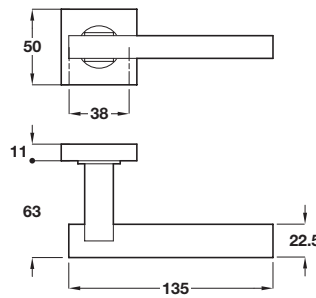


**StarTec METRO lever handles**

- Pair of lever handles and roses
- 8 mm spindle included
- Sprung, for use with standard duty followers
- Bolt through fixings included
- To suit doors **35-44 mm** thick
- Stainless steel

Finish	Cat. No.
Satin stainless steel	902.20.314

Order qty: 1 pair

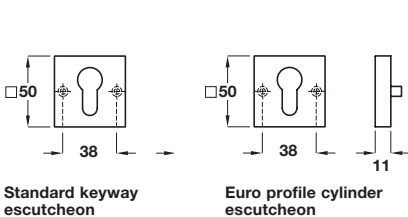


**StarTe VOGUE lever handles**

- Pair of lever handles and roses
- 8 mm spindle included
- Sprung, for use with standard duty followers
- Bolt through fixings included
- To suit doors **35-44 mm** thick
- Stainless steel

Cat. No. box:Finish	Cat. No.
Satin stainless steel	902.20.316

Order qty: 1 pair



Standard keyway escutcheon

Euro profile cylinder escutcheon

WC release and inside turn



**Lever handle accessories**

- **Escutcheons:** Fixings included
- **WC release and inside turn:**  
To suit doors 35-44 mm thick  
8 mm spindle and fixings included
- Stainless steel

Finish	Satin stainless steel
Standard keyway escutcheon	
Cat. No.	902.51.106
Euro profile cylinder escutcheon	
Cat. No.	902.52.106
WC release and inside turn*	
Cat. No.	902.53.106

Order qty: 1 pair (\*set)