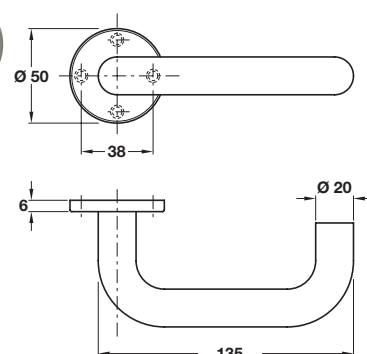


Ø 20 mm safety lever handles

- Pair of lever handles and roses
- Grub screw fixing on 8 mm spindle
- Sprung for use with standard duty followers
- To suit doors **35-44 mm** thick
- Fixings included
- Aluminium

Finish	Ø 20 mm
Satin anodised	904.21.501

Order qty: 1 pair

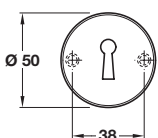


Ø 20 mm safety lever handles

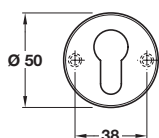
- Pair of lever handles and roses
- Grub screw fixing on 8 mm spindle
- Unsprung for use with heavy duty followers
- To suit doors **35-44 mm** thick
- Fixings included
- Aluminium

Finish	Ø 20 mm
Satin anodised	904.21.511

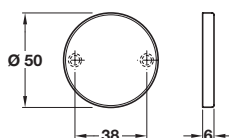
Order qty: 1 pair



Standard keyway escutcheon



Euro profile cylinder escutcheon



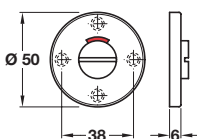
Blank escutcheon

Escutcheon, profile cylinder

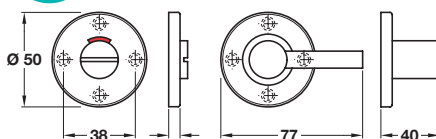
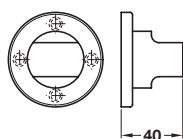
- **Escutcheons:** Fixings included
- **WC/emergency release and inside turn:**
To suit doors **35-44 mm** thick
5 mm spindle and fixings included
- Aluminium

Finish	Satin
Standard keyway escutcheon	
Cat. No.	904.51.151
Profile cylinder escutcheon	
Cat. No.	904.52.151
Blank escutcheon	
Cat. No.	904.50.151
Emergency release and inside turn*	
Cat. No.	904.53.151
Disabled emergency release and inside turn*	
Cat. No.	904.54.151

Order qty: 1 pc



WC release and inside turn



Disabled WC release and inside turn



TCH 2013. © Häfele U.K. Ltd 2013. Dimensional data not binding. We reserve the right to alter specifications without notice.