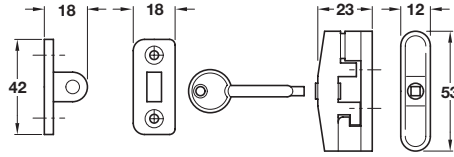


Mortice security bolts for windows
are shown on page 281



Swinglock, window lock

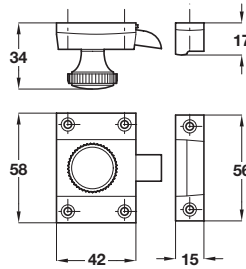
- Suitable for most timber and metal case-ments
- Lock pivots to latch on closing
- Locking action pulls window tight to frame
- Steel receiving plates included
- Fixing screws concealed when locked
- 1 key included
- Steel

Finish	Cat. No.
White	971.00.127
Brown	971.00.121

Order qty: 1 pc

5

Architectural Ironmongery: Window Fittings

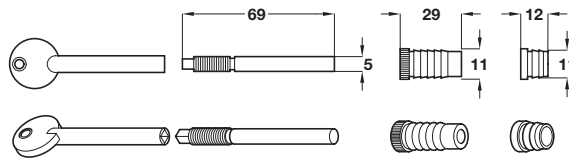
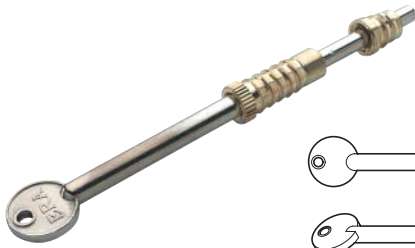


Window/Door catch

- For window shutters
- Brass

Finish	Cat. No.
Polished brass	252.81.802
Satin chrome	252.81.402
Polished chrome	252.81.202

Order qty: 1 pc

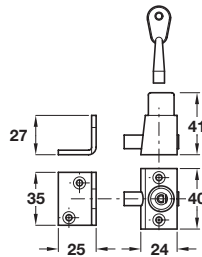


Dual screws

- Suitable for most timber sash windows
- Concealed when fitted
- Supplied in pairs with 1 key included
- Lock uses a key operated locking pin in brass brushes
- Steel and brass

Finish	Cat. No.
Brassed	979.00.405

Order qty: 1 set

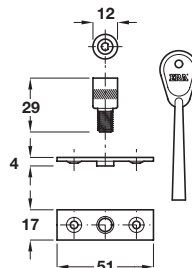


Sash window bolt with standard key

- Suitable for most timber sash and other types of windows
- Press spring bolt to lock, key to unlock
- Plugs conceal and protect fixing screws
- Saw resistant
- 1 key included
- Steel and brass

Finish	Cat. No.
White	971.00.407

Order qty: 1 pc



Sash window lock with standard key

- Suitable for most timber sash windows
- Provides a locking window stop which secures the window in the closed position
- 2 locks and 1 key included (per 1pc ordered)
- Steel and brass

Finish	Cat. No.
Brassed	971.00.415
Satin	971.00.410

Order qty: 1 pc

TCH 2013, © Häfele U.K. Ltd 2013. Dimensional data not binding. We reserve the right to alter specifications without notice.