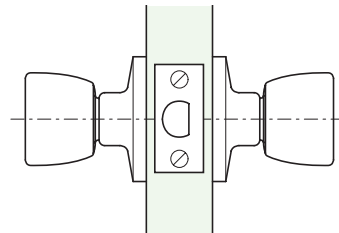
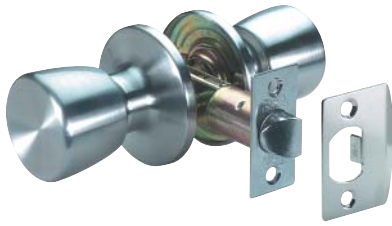
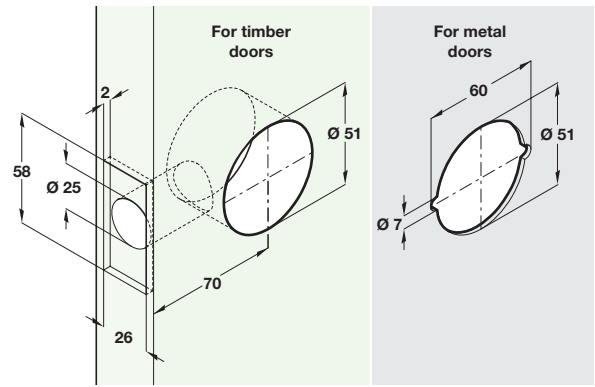
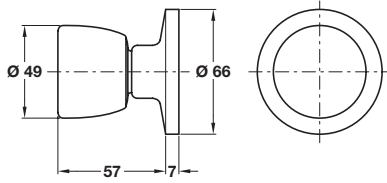


Door knob sets

Suitable for timber or metal doors
 Available in polished brass or satin chrome finish
 Tubular latches are adjustable to either 60 or 70 mm

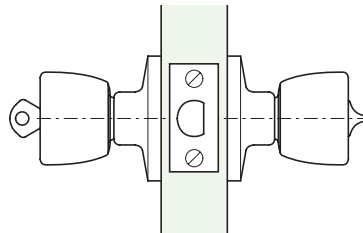


Passage knob set

- Operation: Free both sides
- Backset: 60-70 mm
- Keys: Nil
- Steel

Finish	Cat. No.
Polished brass	911.64.209
Satin chrome	911.64.210

Order qty: 1 set

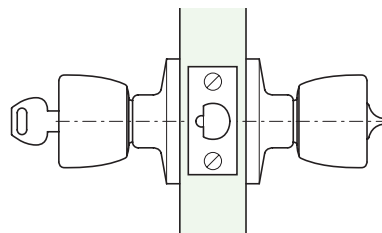
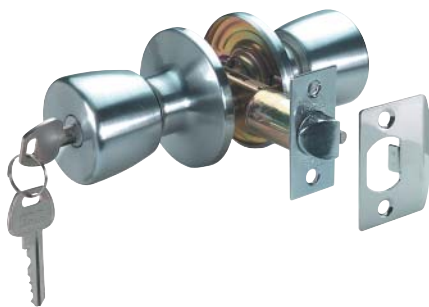


Privacy lock knob set

- Operation: Outside free, unless locked inside with emergency release. Inside lockable with snib
- Backset: 60-70 mm
- Keys: One emergency release
- Steel

Finish	Cat. No.
Polished brass	911.64.211
Satin chrome	911.64.212

Order qty: 1 set

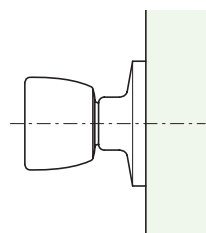


Entrance lock knob set

- Operation: Key from outside. Snib from inside
- Backset: 60-70 mm
- Keys: 2 no.
- Steel

Finish	Cat. No.
Polished brass	911.64.213
Satin chrome	911.64.214

Order qty: 1 set



Dummy door knob

- Operation: None, fixed dead
- Backset: To requirements
- Steel

Finish	Cat. No.
Polished brass	911.64.241
Satin chrome	911.64.242

Order qty: 1 pc

TCH 2013. © Häfele U.K. Ltd 2013. Dimensional data not binding. We reserve the right to alter specifications without notice.