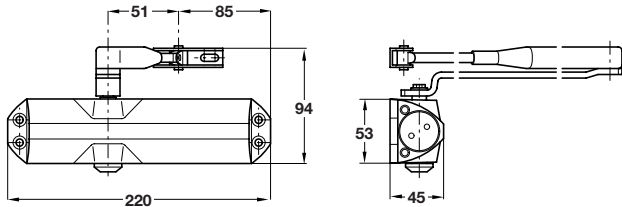


BS EN 1154

3 8 3-4 1 1 2



Dorma TS68 overhead door closer

- Conforms to BS EN 1154
- 2 hour Certifire rated to EN 1634-1
- Power size 3-4
- Max. door width 1100 mm
- Max. door weight 80 kg
- Adjustable closing speed and latch action
- Fig 1, Fig 61 and Fig 66 application
- Cast aluminium body, steel arm assembly

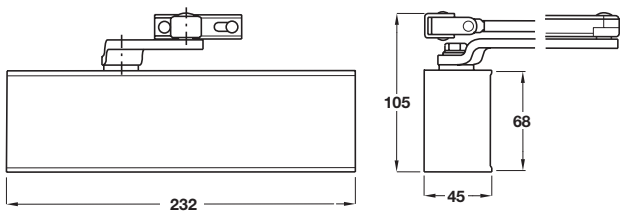


Finish	Cat. No.
Silver sprayed	931.07.059
Gold sprayed	931.07.058

Order qty: 1 pc

BS EN 1154

4 8 3-4 1 1 2



Dorma TS71 overhead door closer

- Conforms to BS EN 1154:
- Certifire approved; certificate no. CF 268
- Power size 3-4
- Max. door width 1100 mm
- Adjustable closing speed and latch action
- Fig 1, Fig 61 and Fig 66 application
- Aluminium body, mild steel arm

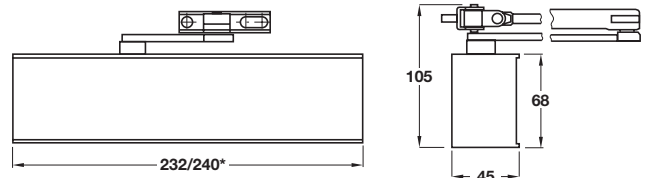


Finish	Cat. No.
Silver	931.07.709

Order qty: 1 pc

BS EN 1154

4 8 3-4 1 1 2



Dorma TS72 VBC overhead door closer

- Conforms to BS EN 1154:1197/A1:2003
- Certifire approved; certificate no. CF 268
- Power size 3-4
- Max. door width 1100 mm
- Adjustable closing speed, latch action and backcheck
- Fig 1 and Fig 61 application
- Order bracket separately for Fig 66 application
- Aluminium body, mild steel arm, *stainless steel cover

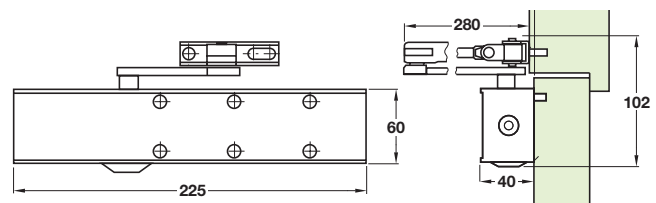


TS72 VBC closer Parallel arm bracket		
Silver	931.06.519	931.06.239
Stainless steel*	931.06.510	931.06.230

Order qty: 1 pc

BS EN 1154

4 8 3-4 1 1 4



Dorma TS73 V overhead door closer

- Conforms to BS EN 1154
- Certifire approved; certificate no. CF 117
- Power size 3-4
- Max. door width 1100 mm
- Adjustable closing speed and latch action
- Fig 1 and Fig 61 application
- Aluminium body, mild steel arm



Finish	Cat. No.
Silver	931.06.449

Order qty: 1 pc

5

Architectural Ironmongery: Closers and Controls