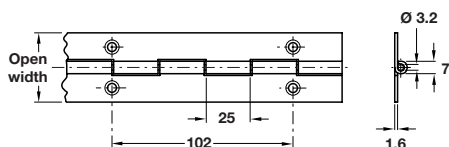


Regular lubrication required unless marked 'maintenance free'



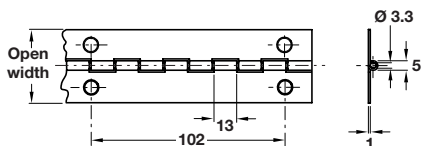
Stainless steel continuous hinge

- 1829 mm length
- Available in 2 widths: 39 and 51 mm
- Medium duty
- 36 holes per hinge
- Stainless steel, mill finish, stainless steel pin



Open width	39 mm	51 mm
Cat. No.	351.13.000	351.13.010

Order qty: 1 pc (1829 mm length)



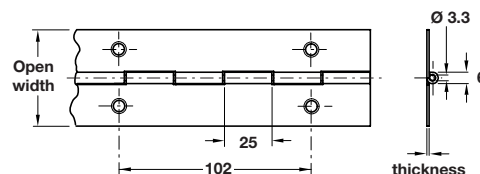
Stainless steel continuous hinge

- 1834 mm length
- Available in 3 widths: 32, 38 and 51 mm
- Light duty
- 36 holes per hinge
- CP grade 4
- Polished stainless steel, stainless steel pin



Open width	32 mm	38 mm	51 mm
Cat. No.	351.14.000	351.14.010	351.14.020

Order qty: 1 pc (1834 mm length)



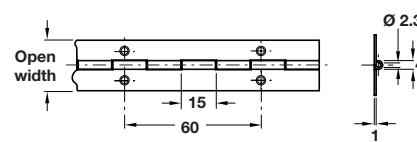
Brass continuous hinge

- 1834 mm length
- Available in 2 widths: 38 and 51 mm
- Light/medium duty
- 36 holes per hinge
- Polished brass, brass pin



Length x Open width	38 mm	51 mm
Thickness	0.9 mm	1.2 mm
Cat. No.	351.16.800	351.16.810

Order qty: 1 pc (1834 mm length)



Aluminium continuous hinge

- 1834 mm length
- Available in 3 widths: 25, 32 and 38 mm
- Light duty
- 62 holes per hinge
- Self colour aluminium, stainless steel pin



Open width	25 mm	32 mm	38 mm
Cat. No.	351.15.900	351.15.910	351.15.920

Order qty: 1 pc (1834 mm length)

TCH 2013. © Häfele U.K. Ltd 2013. Dimensional data not binding. We reserve the right to alter specifications without notice.