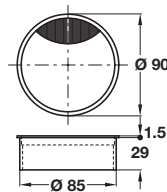


A Cable outlet, Ø 80 mm

- Two part cable outlet, for press fitting/gluing into Ø 80 mm hole
- With flexible brush seal
- Zinc alloy

Finish	Cat. No.
Matt nickel	631.32.604
Stainless steel colour	631.32.004
Aluminium colour (RAL 9006)	631.32.904

Order qty: 1 pc

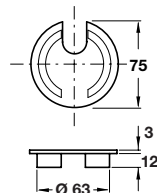


B Cable outlet, Ø 85 mm

- Two part cable outlet, for press fitting/gluing into Ø 85 mm holes
- With flexible brush seal
- Anodised aluminium

Finish	Cat. No.
Anodised aluminium	429.86.925

Order qty: 1 pc

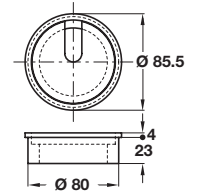


C Cable outlet, Ø 63 mm

- One part cable outlet, for press fitting/gluing into Ø 63 mm holes
- Zinc alloy

Finish	Cat. No.
Polished chrome	428.95.200
Polished brass	428.95.800
Matt chrome	428.95.400

Order qty: 1 pc

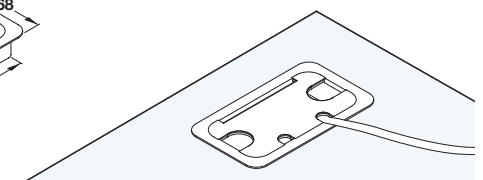
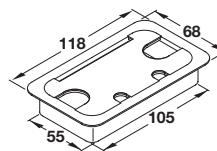


D Cable outlets, Ø 80 mm

- Two part cable outlet, sleeve and cover plate, for installation in Ø 80 mm holes
- Wood

Finish	Cat. No.
Maple unfinished	631.23.100
Maple clear lacquered	631.23.101
Beech unfinished	631.23.300
Beech clear lacquered	631.23.301
Oak unfinished	631.23.400
Oak clear lacquered	631.23.401
Cherry unfinished	631.23.600

Order qty: 1 pc



E Rectangular cable outlet, 55 x 105 mm

- For recess mounting in desktop
- 4 cable apertures and tape slot
- Plastic

Finish	Cat. No.
Light grey	429.88.509
Black	429.88.303

Order qty: 1 pc

TCH 2013. © Häfele U.K. Ltd 2013. Dimensional data not binding. We reserve the right to alter specifications without notice.