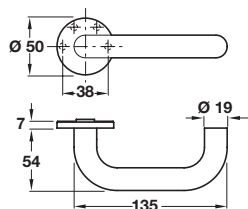




A DONNA lever handles

- Pair of lever handles and roses
- Sprung, for use with standard duty followers
- Bolt through fixings and 8 mm spindle included
- To suit doors 35-44 mm thick
- Stainless steel



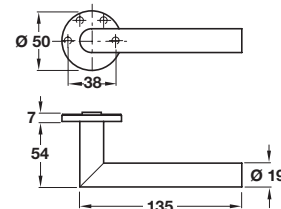
Finish	Cat. No.
Satin stainless steel	902.20.262

Order qty: 1 set



B TRIO lever handles

- Pair of lever handles and roses
- Sprung, for use with standard duty followers
- Bolt through fixings and 8 mm spindle included
- To suit doors 35-44 mm thick
- Stainless steel



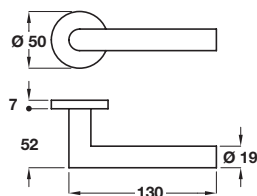
Finish	Cat. No.
Satin stainless steel	902.20.266

Order qty: 1 set



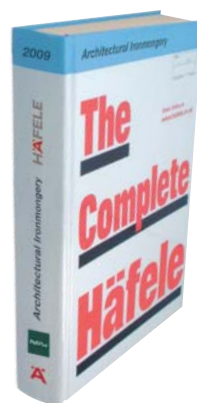
C LITA lever handles

- Pair of lever handles and roses
- Sprung, for use with standard duty followers
- Bolt through fixings and 8 mm spindle included
- To suit doors 35-44 mm thick
- Stainless steel



Finish	Cat. No.
Satin stainless steel	902.20.252

Order qty: 1 pair



For other architectural ironmongery lever handles, refer to Section 1 of the Complete Häfele for Architectural Ironmongery



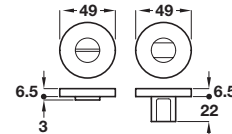
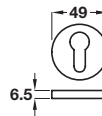
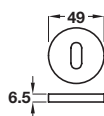
The Complete Häfele Catalogue for Architectural Ironmongery

With over 1,450 pages; includes brand new ranges of high quality door furniture, locks, hinges, glass fittings and sliding door gear.

View online at www.hafele.co.uk or order your copy, also available on CD

D DONNA/TRIO/LITA accessories

- **Escutcheons:**
Fixings included
- **WC release and inside turn:**
To suit doors 35-44 mm thick
8 mm spindle and fixings included
- Stainless steel



Finish	Standard keyway escutcheon	Euro profile escutcheon	WC release and inside turn*
Satin stainless steel	902.51.044	902.52.044	902.53.044

Order qty: 1 pair (*set)

TCH-FF 2010, HUK. Dimensional data not binding. We reserve the right to alter specifications without notice.