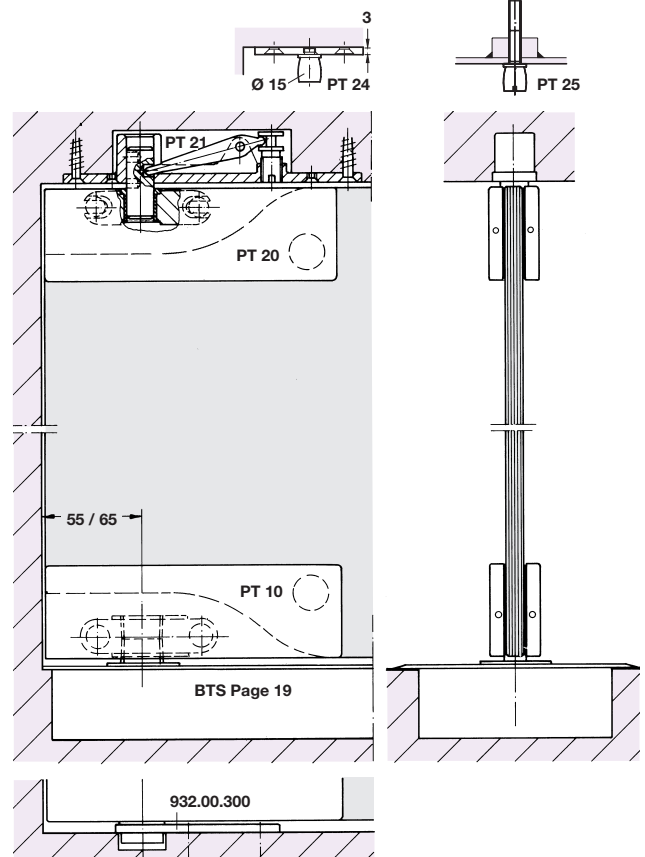




Type B Door shown



**Discontinued** ●

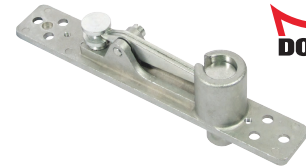
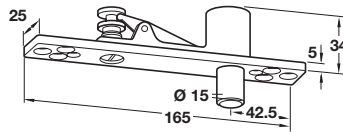
**Discontinued when stock = 0** +

**A** PT21 Retractable top pivot

- With Ø 15 mm pin to suit PT 20 top patch fitting shown on page 14
- Zinc die-cast and steel

Cat. No. 981.36.220

Order qty: 1 pc



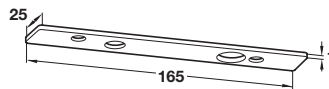
**B** PT21 Cover plate

- Stainless steel

Finish	Cat. No.
Satin stainless steel	981.36.230
Polished stainless steel	+ 981.36.231

Order qty: 1 pc **Discontinued when stock = 0**  
**981.36.231 - No longer available**

**Item B.**  
Text amended to say the top pivot (Item A) is not included



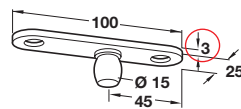
**C** PT24 Top pivot plate

- With Ø 15 mm pin
- Steel

Cat. No. 981.36.240

Order qty: 1 pc

**Item C.**  
Cat. No. box - incorrect text removed



**Item C.**  
Catalogue shows 6 mm  
Correct dimension is 3 mm

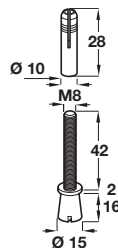


**D** PT25 Top pivot pin

- M8 screw x Ø 15 mm
- Plated steel

Cat. No. + 981.36.370

Order qty: 1 pc



**E** Floor bearing free swing floor pivot

- To suit PT10 bottom patch fittings shown on page 14, and bottom rails 04/602
- Maximum load capacity 200 kg
- Milled aluminium

Cat. No. 932.00.300

Order qty: 1 pc

