

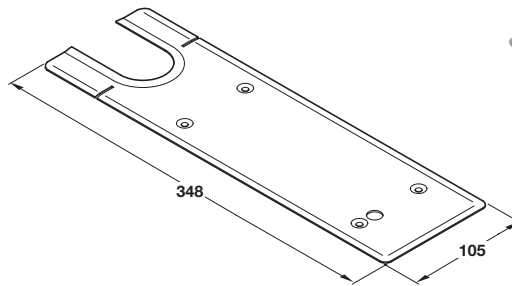
**Item A - New item added.**  
932.10.110/119/118 no longer compatible with  
floor springs on pages 59 & 61.  
Replaced by 932.10.160

**A Floor spring cover plate**

- To suit all spring on pages 59 and 61
- Corners adjacent to pivot may be removed for single action applications
- To suit timber or metal doors
- Stainless steel

Finish	Cat. No.
Satin stainless steel	932.10.160

Order qty: 1 pc

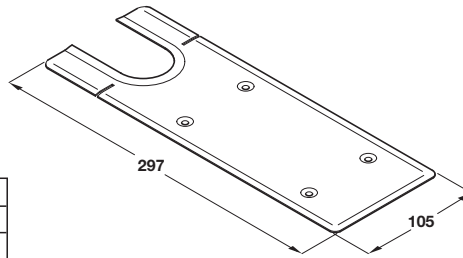


**B Floor spring cover plate**

- To suit all spring on page 60
- Corners adjacent to pivot may be removed for single action applications
- Stainless steel or brass

Finish	Cat. No.
Satin stainless steel	932.10.130
Satin brass	932.10.131

Order qty: 1 pc



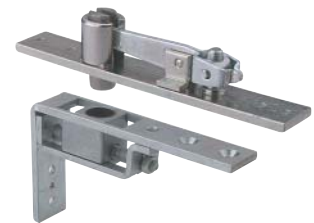
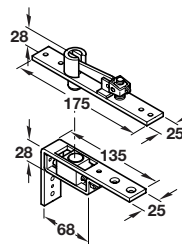
**Item C.**  
Reverted back to original  
catalogue specification as  
fixing screws are included

**C Heavy duty double action top centre**

- To suit timber and metal doors
- Adjustable retractable upper pivot for double action doors
- Lateral adjustment between 30-50 mm
- Recommended minimum depth of head frame 50 mm
- Fixing screws included
- Mild steel. Zinc plated

Cat. No.	932.10.400
----------	------------

Order qty: 1 pc



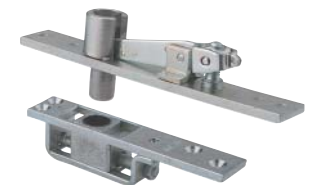
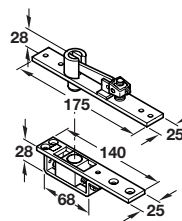
**Item D.**  
Reverted back to original  
catalogue specification as  
fixing screws are included

**D Standard duty double action top centre**

- To suit timber and metal doors
- Adjustable retractable upper pivot for double action doors
- Lateral adjustment between 36-58 mm
- Recommended minimum depth of head frame 50 mm
- Fixing screws included
- Mild steel. Zinc plated

Cat. No.	932.10.410
----------	------------

Order qty: 1 pc



**Item E.**  
Reverted back to original  
catalogue specification as  
fixing screws are included

**E Double action bottom strap**

- To suit timber and metal doors
- Fixing screws included
- Drop forged steel. Zinc plated

Cat. No.	932.10.270
----------	------------

Order qty: 1 pc

