

BS EN 1154



*Fig 1/61 Delayed action: 4



Silver finish

A TS 5000 overhead rack and pinion guide rail door closer

Specification:

Surface mounted eccentric rack and pinion door closer with guide rail arm for doors up to 1400 mm, with adjustable closing force, optical strength indicator, backcheck, hydraulic latching action and eccentric rack and pinion for easier opening. All adjustments on the front of closer.

Features:

- Eccentric rack and pinion for easier opening
- Non projecting guide rail arm
- Closing force adjustable from front (size range EN 2-6)
- Optical closing force indicator
- Adjustable backcheck
- Valve adjusting latching speed
- All adjustments on front of closer

Models

- Standard (Fig 1, Fig 61 and Fig 66)
- Delayed action (Fig 1, Fig 61)

Options (see page 25-27 for details)

- Hold open insert (not for fire doors)
- T-stop guide rail
- Mounting plate
- Soffit bracket, frame mounting
- Fig 1 glass clamping plate
- Fig 1 glass mounting plate

Certification

- Tested and approved to BS En 1154: 1997
- Tested to conform with CE requirements
- Certifire approved; ertificate no. CF145 120 mins timber

Material:

Aluminium body and guide rail. Mild steel arm

Electro plated mild steel cover (not suitable for external use)*

Item A, Text amended

- Also available electro-mechanical hold-open versions (see pages 44-45)
- A door stop should always be used for non Backchecked doors, and where practical for Backchecked doors, and at least 66% if the door width away from the hinge. Alternative would be to fit a T-stop guide rail (see page 26)

TS 5000: Fig 1/61

Finish	Cat. No.
Silver	931.10.609
Satin stainless steel*	931.11.840
Polished stainless steel*	931.11.841
Polished brass*	931.11.848

Order qty: 1 pc

TS 5000 S: Fig 1/61 Delayed action

Finish	Cat. No.
Silver	931.11.859
Satin stainless steel*	931.11.860
Polished stainless steel*	931.11.861
Polished brass*	931.11.868

Order qty: 1 pc

TS 5000 L: Fig 66 (Delayed action not available)

Finish	Cat. No.
Silver	931.11.879
Satin stainless steel*	931.11.880
Polished stainless steel*	931.11.881
Polished brass*	931.11.888

Order qty: 1 pc

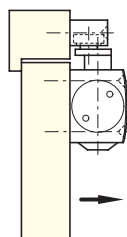
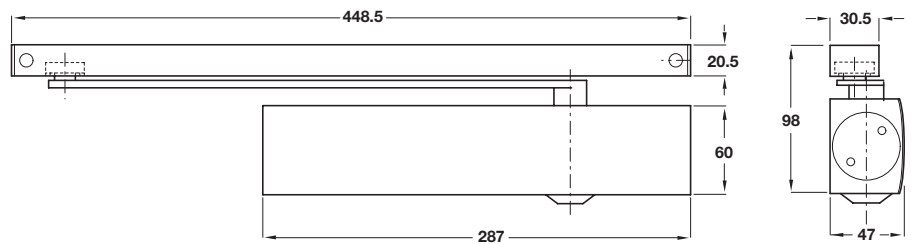


Fig 1 Standard application
Closer is fixed to the pull side of the door

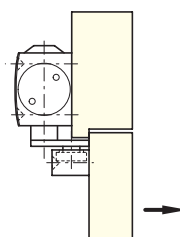


Fig 61 Transom application
Closer is fixed to the push side of the door (overhead installation)

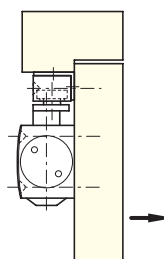


Fig 66 Transom application
Closer is fixed to the push side of the door using fixing bracket

Closing force

Size	Max. door width	Min. closing moments
2	850 mm	13 Nm
3	950 mm	18 Nm
4	1100 mm	26 Nm
5	1250 mm	37 Nm
6	1400 mm	54 Nm

6