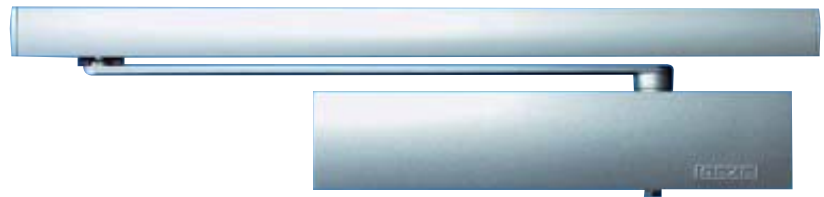


Conforms to BS EN 1155



Silver finish

**A** TS 5000 E electromechanical hold-open eccentric rack and pinion door closer with guide rail

**Specification:**

Surface mounted eccentric rack and pinion door closer with electro-mechanical guide rail arm for doors up to 1400 mm wide, with adjustable closing force, optical strength indicator, adjustable backcheck, hydraulic latch action and eccentric pinion

All adjustments at front of closer

When voltage applied to closer - door held open

Voltage off - door will close automatically

The door may be closed manually at any time regardless of whether the voltage is applied or not

**Features**

- Eccentric rack and pinion for easier opening
- Non projecting guide rail arm
- Closing force adjustable from front (size range EN 2-6)
- Optical closing force indicator
- Adjustable backcheck
- Valve adjustable latching speed
- All adjustments at front of closer

**Electrical data**

- Operating voltage 24V DC  $\pm$  10%
- Connecting load 100mA
- Max. permissible residual ripple 20%
- Rating 100%
- Enclosure rating IP43
- For interior use only
- A suitable switch should be installed for test purposes (see **Section 8**)

**Connection**

The power supply cable (max. cross section 0.8 mm<sup>2</sup>) from the fire detection control unit (24V DC) is connected to terminal 'M' in the guide rail

**Models**

Standard (Fig 1)

**Certification**

- Tested and approved to BS EN 1155:1997
- Tested to conform with CE requirements
- Certifire approved; certificate no. CF145
- 120 mins timber

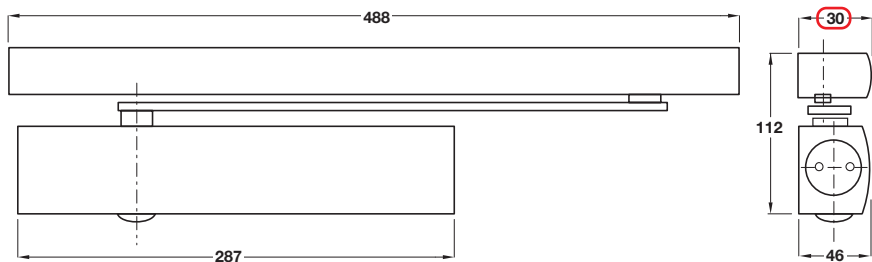
**Material**

- Aluminium body and guide rail. Mild steel arm
- A door stop should always be used for non backchecked doors, and where practical for backchecked doors, and at least 66% of the door width away from the hinge.

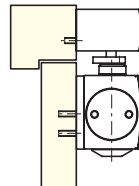
Fig 1

Finish	Cat. No.
Silver	931.10.649
Satin stainless steel	931.10.540
Polished stainless steel	931.10.541

Order qty: 1 pc



**Item A.**  
Catalogue shows 47 mm  
Correct dimension is 30 mm



**Fig 1 Standard application**  
Closer is fixed to the pull side of the door

**Closing force**

Size	Max. door width	Min. closing moments
<b>2</b>	850 mm	13 Nm
<b>3</b>	950 mm	18 Nm
<b>4</b>	1100 mm	26 Nm
<b>5</b>	1250 mm	37 Nm
<b>6</b>	1400 mm	54 Nm