

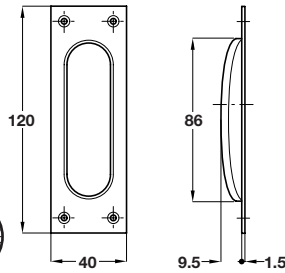
Polished brass finish

### A Flush pull handle

- 120 x 40 x 11 mm
- Suitable for sliding timber doors
- Fixings not included
- Brass

Finish	Cat. No.
Polished brass	901.01.301

Order qty: 1 pc



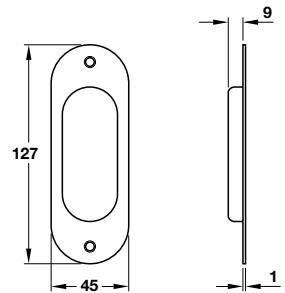
Polished brass finish

### B Flush pull handle

- 127 x 45 x 10 mm
- Suitable for sliding timber doors
- Fixings included
- Brass

Finish	Cat. No.
Polished brass	901.04.301

Order qty: 1 pc



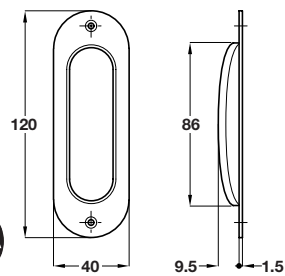
Polished brass finish

### C Flush pull handle

- 120 x 40 x 11 mm
- Suitable for sliding timber doors
- Fixings not included
- Brass

Finish	Cat. No.
Polished brass	901.00.301

Order qty: 1 pc



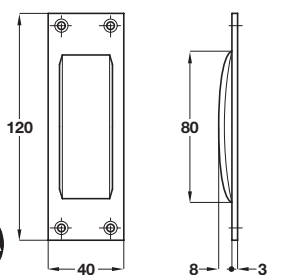
Polished brass finish

### D Flush pull handle

- 120 x 40 x 11 mm
- Suitable for sliding timber doors
- Fixings not included
- Brass

Finish	Cat. No.
Polished brass	901.03.301

Order qty: 1 pc



Polished brass finish

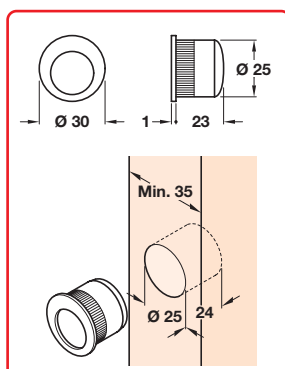
### E Pocket door flush handle

- Ø 30 x 24 mm
- Push fit into Ø 25 mm hole
- Minimum door thickness 35 mm
- Brass

Finish	Cat. No.
Polished brass	901.01.201
Polished chrome-plated	901.01.202

Order qty: 1 pc

**Item E.**  
Dimensions amended in  
text and on illustration



20.06.11/1\*