

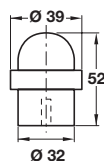
Satin stainless steel finish

StarTec



A Door stop, floor mounted, Ø 39 mm

- Concealed floor fixing
- Height 52 mm
- Fixings included
- Stainless steel, rubber buffer



Finish	Cat. No.
Satin stainless steel	937.52.000

Order qty: 1 pc

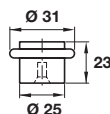
Satin stainless steel finish

StarTec



B Door stop, floor mounted, Ø 31 mm

- Concealed floor fixing
- Height 23 mm
- Fixings included
- Stainless steel, rubber buffer



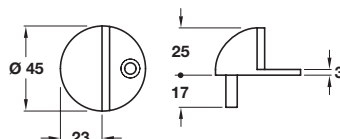
Finish	Cat. No.
Satin stainless steel	937.52.060

Order qty: 1 pc

Satin stainless steel finish

C Door stop, floor mounted, Ø 45 mm

- Screw floor fixing, with pin
- Height 25 mm
- Fixings included
- Stainless steel, rubber buffer



Finish	Cat. No.
Satin stainless steel	937.12.000
Polished stainless steel	937.51.751

Order qty: 1 pc



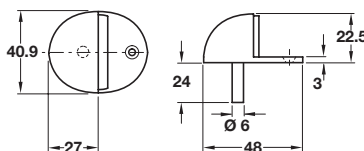
Polished brass finish

D Door stop, floor mounted

- Screw floor fixing, with pin
- Height 22.5 mm
- Fixings included
- Brass, rubber buffer

Item D.
Dimension tolerance
text added

- **Please note there is a ±3 mm tolerance on dimensions**



Finish	Cat. No.
Polished brass	937.40.701

Order qty: 1 pc



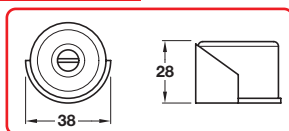
Polished brass finish

E Door stop, floor mounted, Ø 38 mm

- Screw fixing
- Height 28 mm
- Fixing screws included
- Brass, rubber buffer

Item E.
Dimension amended and
tolerance text added

- **Please note there is a ±3 mm tolerance on dimensions**



Finish	Cat.No.
Polished brass	937.41.308

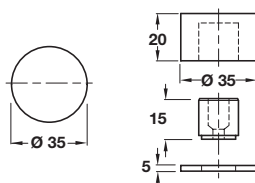
Order qty: 1 pc



Satin anodised finish

F Door stop, floor mounted, Ø 35 mm

- Concealed floor fixing
- Height 20 mm
- Fixing screw included
- Aluminium, rubber buffer



Finish	Cat. No.
Satin anodised	940.09.310

Order qty: 1 pc



25.03.13/1*