

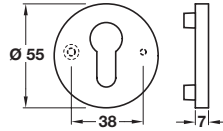
1

A Escutcheon, profile cylinder

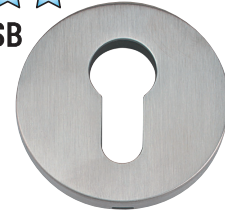
- Concealed fixing
- Fixing screws not included (order separately), see item **E**
- 304 stainless steel

| Finish | Cat. No. |
|--------------------------|------------|
| Satin stainless steel | 902.52.000 |
| Polished stainless steel | 902.52.001 |

Order qty: 1 pair



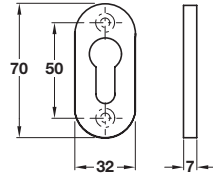
Satin stainless steel finish



B Escutcheon, profile cylinder

- Concealed fixing
- Fixing screws not included (order separately), see item **E**
- 304 stainless steel

| Finish | Cat. No. | Order qty |
|--------------------------|------------|-----------|
| Satin stainless steel | 902.52.020 | 1 pair |
| Polished stainless steel | 902.52.021 | 1 pc |



Satin stainless steel finish



Items B and C.
Text amended/removed -
Reverted back to original
catalogue specification as
fixings not included

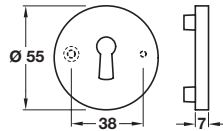
Item B.
Order qty amended

C Escutcheon, standard keyway

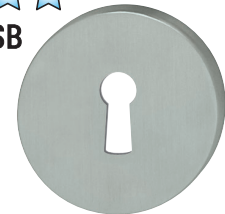
- Concealed fixing
- Fixing screws not included (order separately), see item **E**
- 304 stainless steel

| Finish | Cat. No. |
|--------------------------|------------|
| Satin stainless steel | 902.51.046 |
| Polished stainless steel | 902.51.047 |

Order qty: 1 pair



Satin stainless steel finish

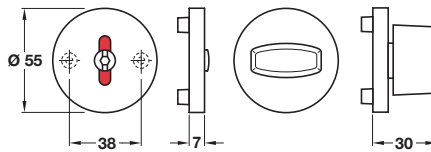


D Emergency release indicator and inside turn

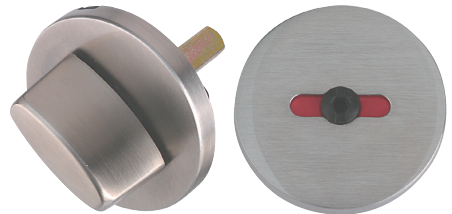
- Concealed fixing
- 8 mm spindle included
- To suit doors up to **44 mm** thick
- Fixing screws not included (order separately), see item **E**
- 304 stainless steel

| Finish | Cat. No. |
|--------------------------|------------|
| Satin stainless steel | 902.53.000 |
| Polished stainless steel | 902.53.001 |

Order qty: 1 set



Satin stainless steel finish



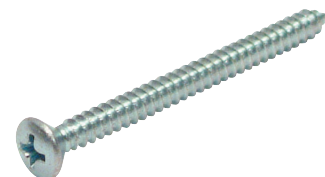
E Bolt through fixing screw

- Ø 4.2 mm
- To suit doors **42-46 mm, 52-56 mm** and **62-66 mm** thick
- 2 required per rose
- Steel, zinc-plated

| Length | For door thickness | Cat. No. |
|--------|--------------------|------------|
| 50 mm | 42 - 46 mm | 909.90.746 |
| 60 mm | 52 - 56 mm | 909.90.748 |
| 70 mm | 62 - 66 mm | 909.90.752 |

Order qty: 1 pc

Item E.
Catalogue shows...
'52-56 mm'
Correct size is '62-66 mm'



19.06.12/5*