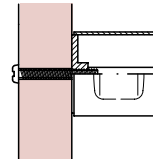
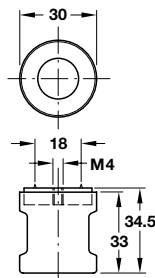


Symo 3000 Locking System, 33 mm Lock Handles

Dimensions in mm



- **A Fixed handle, screw fixing**
- With M4 internal thread
- Matt nickel plated zinc alloy
- **Accessory:** 1 M4 x 25 mm mounting screw



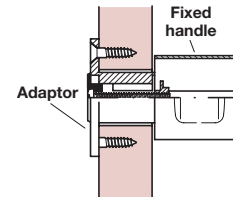
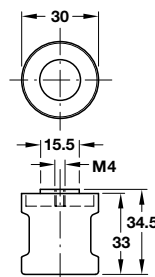
A Fixed handle, screw fixing

	Cat. No.
With rings	229.84.610 Re-instated
Without rings	● 229.83.610

Packing: 1 pc



- **B Fixed handle for use with adaptor**
- With M4 internal thread
- For maximum wood thickness 19 mm
- Matt nickel plated zinc alloy
- **Accessory:** 1 M4 x 25 mm mounting screw



B Fixed handle for use with adaptor

	Cat. No.
With rings	● 229.84.620
Without rings	● 229.83.620

Packing: 1 pc

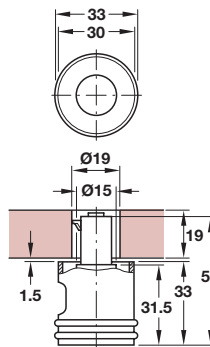
Discontinued •

Discontinued when stock = 0 +

10



- **D Lock handle for cylinder cores**
- For on-site installation of cylinder cores
- Left or right handed
- For 19 mm wood thickness
- Matt nickel plated zinc alloy



D Lock handle for cylinder cores

Handed	left	right
With rings	● 229.84.601	229.84.600
Without rings	● 229.83.601	● 229.83.600

Packing: 1 pc

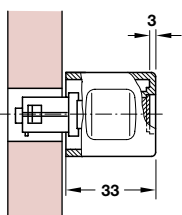


Fig. shows : 33 mm fixed or lock handle with 1.2 mm cover plate

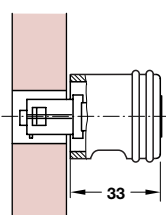


Fig. shows : 33 mm fixed or lock handle with 4.2 mm cover plate

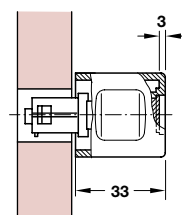


Fig. shows : 33 mm lock handle with plate lever cylinder core

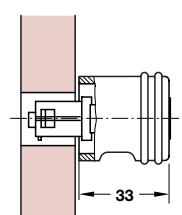


Fig. shows : 33 mm lock handle with pin tumbler cylinder core

02.11.09/6