

- A door stop should always be used for non back checked doors, and where practical for back checked doors, and at least 2/3rds of the door width away from the hinge
- Door stops shown in Section 4, pages 44-45

Conforms to BS EN 1154

Size	Max. door width	Min. closing moments
3/4	950 / 1100 mm	18 Nm



Satin stainless steel finish

A Overhead door closer, half radius cover



Item A.
Catalogue shows 73 mm, Correct dimension is 62 mm
Catalogue shows 278 mm, correct dimension is 237 mm

Specification:

Universal surface mounted rack and pinion door closer with flat form arm for doors up to 1100 mm, with valve adjustable hydraulic latch action and closing speed

- Fig. 1, Fig. 6 and Fig. 66 Applications

Certifire approved, CF144

Standard features:

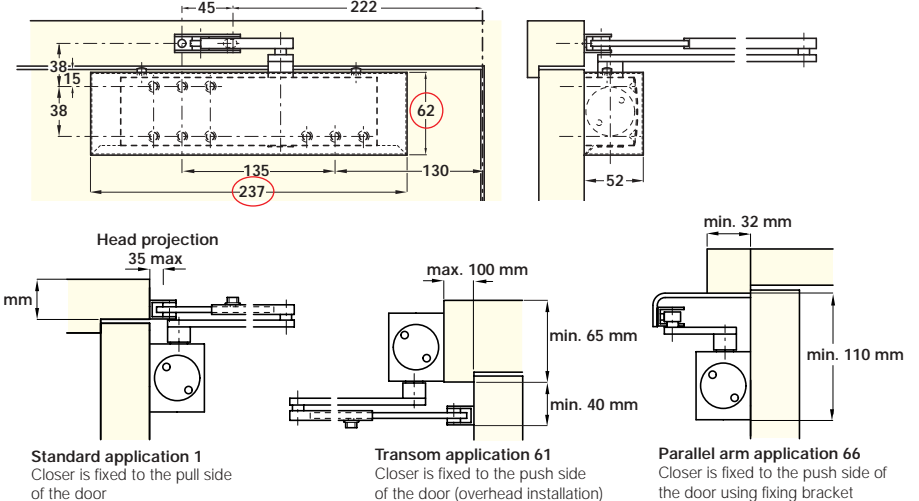
- Universal fixings (Fig.1, 61 and 66) in one closer
- Power 3/4 shoe position for fig 1 & 61 only
- Valve adjustable latching action
- Steel flat form arm
- Valve adjustable closing speed

Material:

Cast aluminium body

Finish	Cat. No.
Satin stainless	931.16.890
Polished stainless	931.16.891
Polished brass	931.16.898

Packing: 1 pc



B Overhead door closers

Specification:

Universal surface mounted rack and pinion door closer with flat form arm for doors up to 1100 mm, with valve adjustable hydraulic latch action and closing speed

- Fig. 1, Fig. 6 and Fig. 66 Applications

Certifire approved, CF144

Standard features:

- Universal fixings (Fig.1, 61 and 66) in one closer
- Power 3/4 shoe position for fig 1 & 61 only
- Valve adjustable latching action
- Steel flat form arm
- Valve adjustable closing speed
- Hold open (specify)

Material:

Cast aluminium body

Overhead door closer

Finish	Cat. No.
Silver	940.01.626
Black	931.16.603

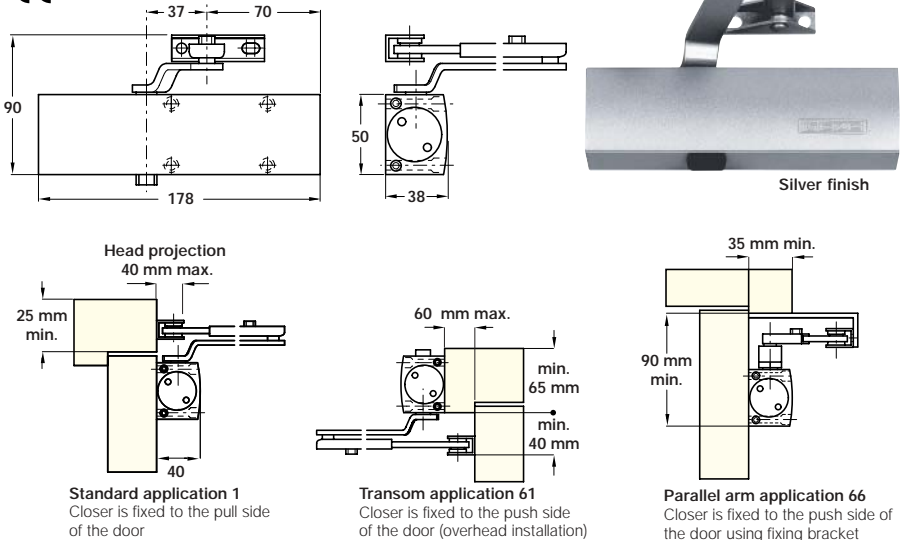
Overhead door closer, hold open

Finish	Cat. No.
Silver	931.16.849
Black	931.16.843

Packing: 1 pc

Conforms to BS EN 1154

Size	Max. door width	Min. closing moments
3/4	950 / 1100 mm	18 Nm



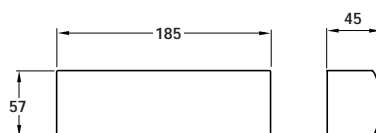
Silver finish

C Full covers

- To suit item A
- Steel

Finish	Cat. No.
Satin stainless steel	940.01.640
Polished stainless steel	940.01.641
Polished brass	940.01.648

Packing: 1 pc



Polished brass finish



Dimensions in mm

We reserve the right to alter specifications without notice.